

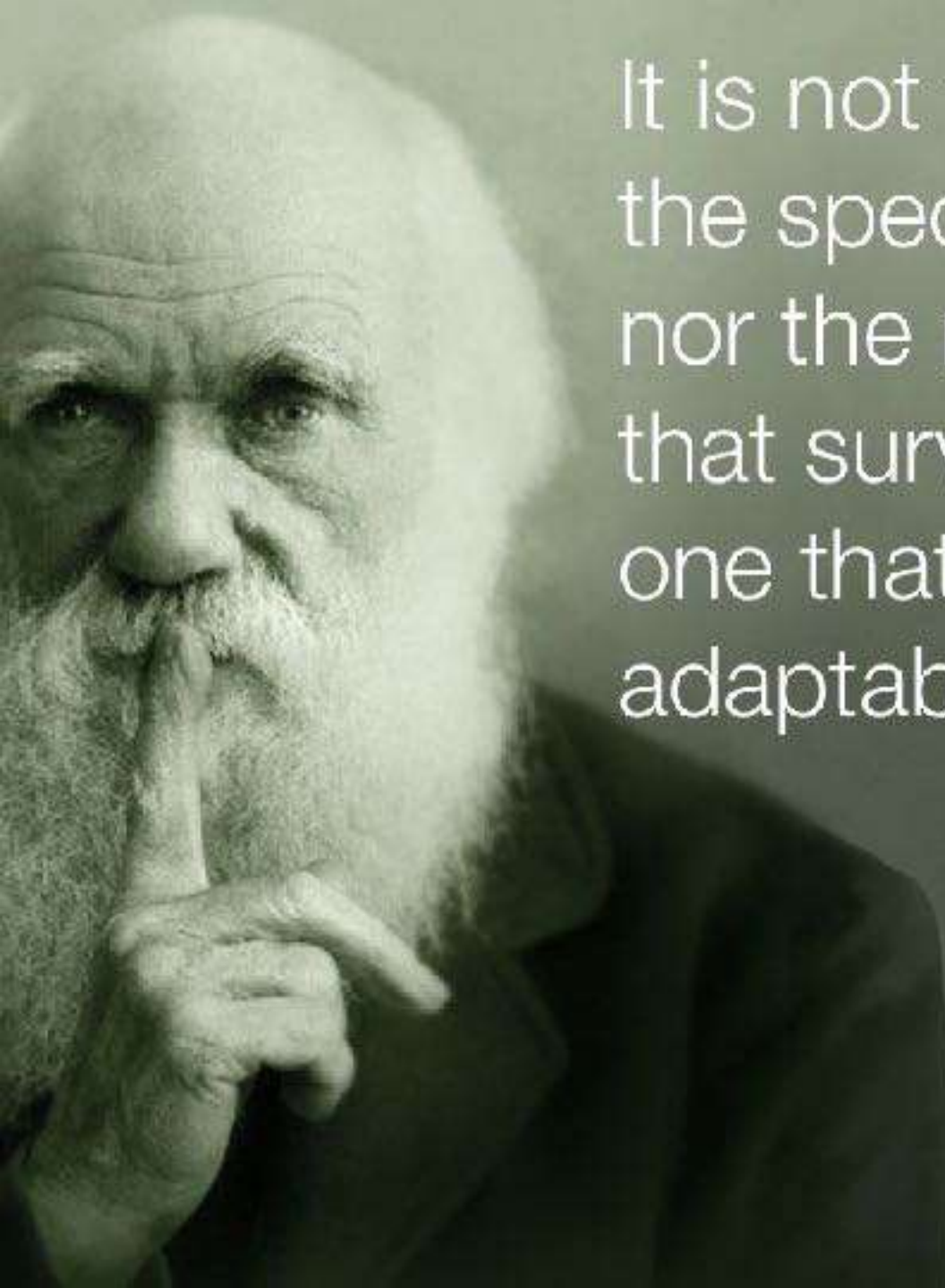
Healthy City
Strategy



Cross Sector Connections: Building Bridges for Whole Community Resilience

Healthy City Strategy
kelowna.ca/planningprojects





It is not the strongest of the species that survives, nor the most intelligent that survives. It is the one that is the most adaptable to change.

-Charles Darwin



**Community Planning:
a Broad, Integrated
Approach**



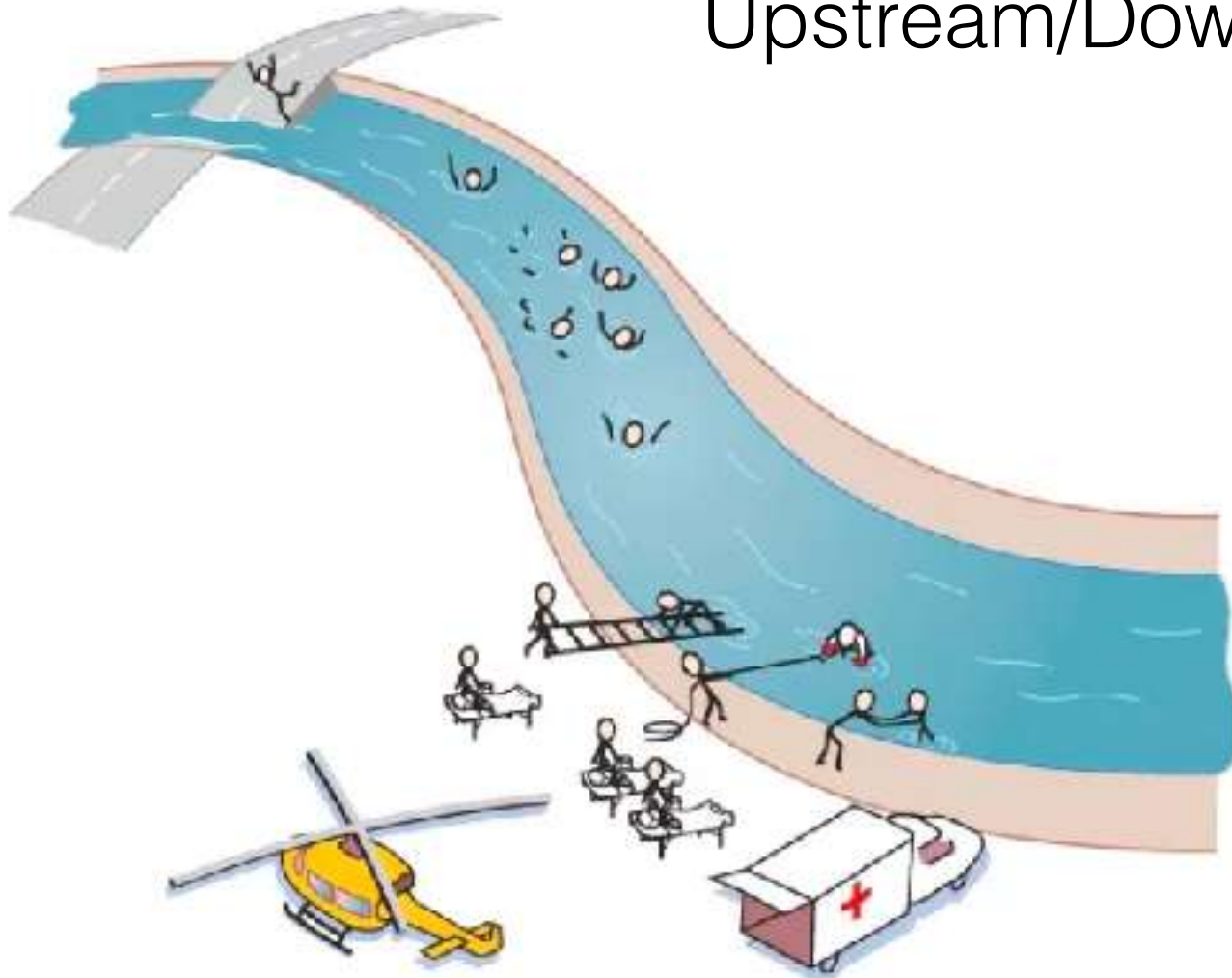
Sustainable Urban Systems



Health Drivers

- 2012 Ministry of Health mandate that HAs must work with LG to create communities where people can more easily make healthy choices
- Report quarterly on activity with LG partners
- Health lens to LG planning and policy
- Upstream systems / planning v. downstream
- Work varies from parks and rec master plan to poverty reduction to consulting on energy and emissions plan

Upstream/Downstream



In Interior Health, we all have a role

- Health Emergency Management
- Epidemiologist
- Medical Health Officer
- Environmental Health Officers
- Public Health Dietitian
- Aboriginal Health Team
- Community Health Facilitator
- Healthy Built Environment Specialist
- Energy and Environment Sustainability Department
- Integrated Tobacco Program
- Climate Change and Health Committee



Benefits of a Partnership

- Exchange of knowledge and expertise
- Synergies for mutually beneficial projects/research
- Public acceptance
- Trust
- Credibility
- Public engagement





Healthy City Strategy

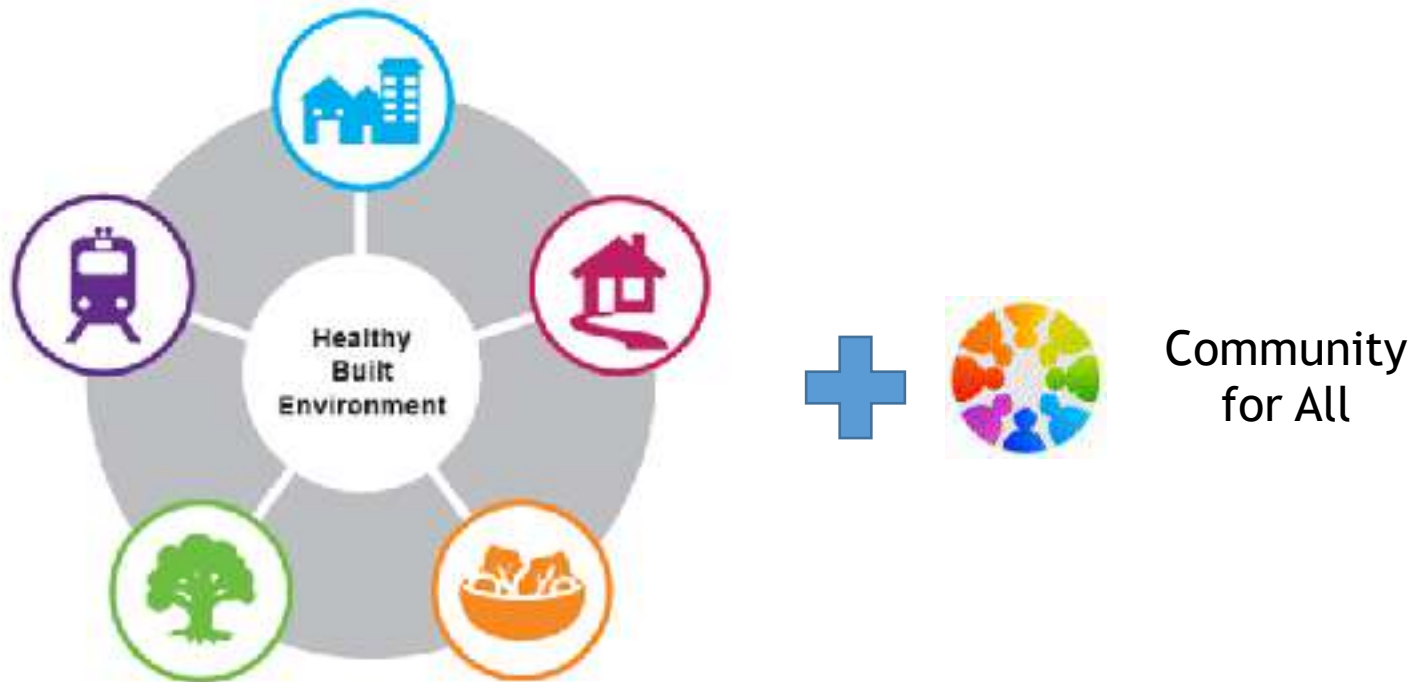
The Healthy City Strategy will be a long-term, integrative plan that will focus on healthy built environment, community health and quality of life for all Kelowna residents.

Vision:

Working together to create built environments in which people and places thrive.



Healthy City Strategy Theme areas



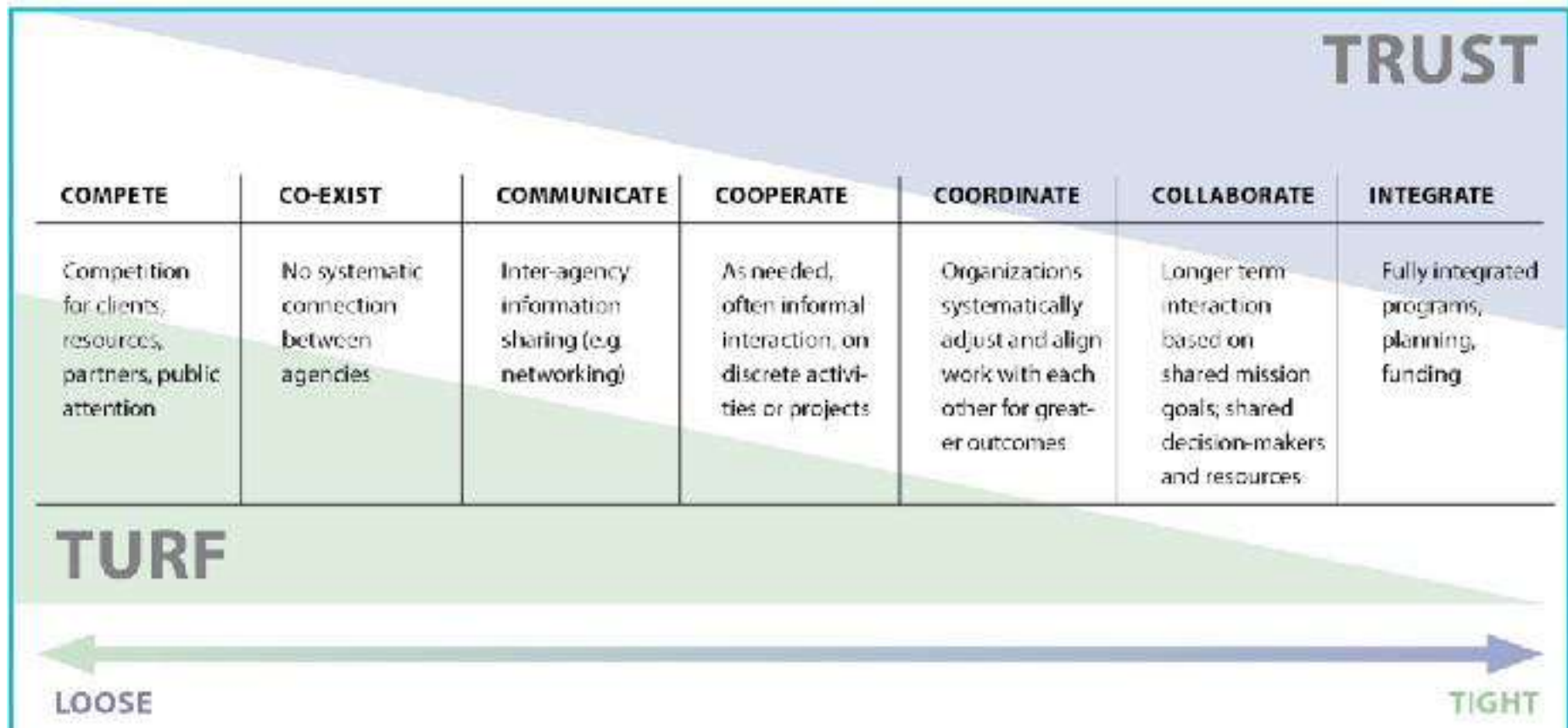
Our Working Relationship



Guiding Principles

1. Prioritize the built environment
2. Integrate health in policies
3. Maximize partnerships for impact
4. Engage broadly for a healthy city
5. Lead and catalyze innovation
6. Embrace complexity

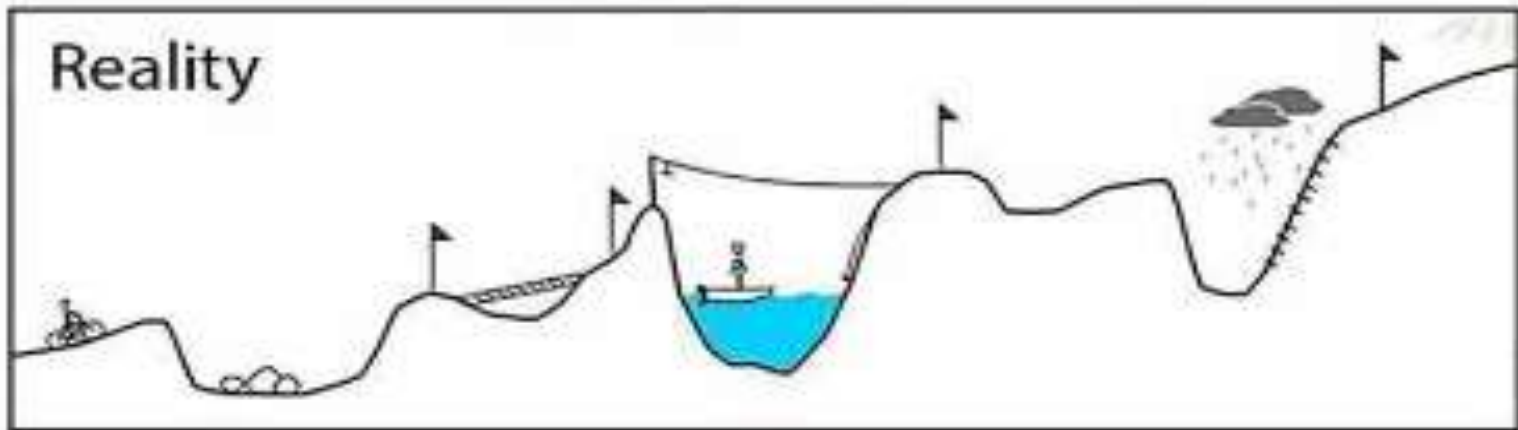
Moving Towards 'Trust' (HD)



Your plan



Reality



Complexity of Planning & an Uncertain Future

- Governance - climate change and health is not a formal partnership
- Partnership has created a nimble relationship
- Investment in time, trust and expertise has created an ability to address complex issues together

PARTNERSHIP



The case for climate - flooding



The case for climate - drought

44 days without rain
Capital News Aug 11

Drought could worsen
Castanet, Aug 23

**Okanagan Escalates to
Drought Level 3,**
OBWB, Sep 1

**Kelowna's on the verge of
having its longest drought
ever,**
KelownaNow, August 11

**Dry summer on verge of
setting new record**
Kelowna Daily Courier, Aug 10

**From spring flooding
to drought
conditions in the
Okanagan**
InfoTel, Aug 23

**Drought conditions worsen in
parts of southern B.C.**

Concerns raised over keeping stream
levels high enough for salmon and other
fish to survive
CBC, Sept 8

The case for climate - fires

*Smoke advisory continues
Kelowna Capital News, Aug 19*

Air Quality (pM2.5): 50.3 $\mu\text{g}/\text{m}^3$



Future Trends

1. Climate trends
 - ~ 2°C temperature ↑
 - hot, dry summers
 - More rain, less snow
2. ↑ drought
3. ↑ flooding
4. ↑ risk for pests
5. Economic impacts (e.g. agriculture, tourism)
6. Health impacts



Climate and Health

.....

According to the Canadian Red Cross, "Those who experience crisis situations are very likely to experience extreme stress – this is entirely normal. However, extreme stress can seriously affect your health and daily life." (...).

.....



Community Climate Action Plans – Support Letters

- ▶ Livable community
- ▶ Health benefits
- ▶ Protect land, water and air
- ▶ Reduce energy consumption
- ▶ Manage risks
- ▶ Leverage external sources of funding

\$34

million

annual savings with Plan
compared to without Plan

Working Together – Case Study

Partnership with FortisBC,
City and Interior Health to
promote the
**Environmental
Conservation Assistance
Program**



Partnership w/Fortis – Case Study



- **Planning**

- Climate Action Plan
- Healthy Housing Strategy

- **Funding**

- Community Energy Advisor
- CCAP

- **Programs**

- ECAP
- Energy Diet
- Rental Apartment Efficiency Program

Charting a Path Forward



"IF YOU WANT TO GO FAST, GO ALONE.
IF YOU WANT TO GO FAR,
GO TOGETHER."
- AFRICAN PROVERB

