

# Heat Alert Response System: Southern Interior of BC

## Interior Health Demonstration Project

Dr. Sue Pollock, Medical Health Officer

Heather Deegan, Director Healthy Communities



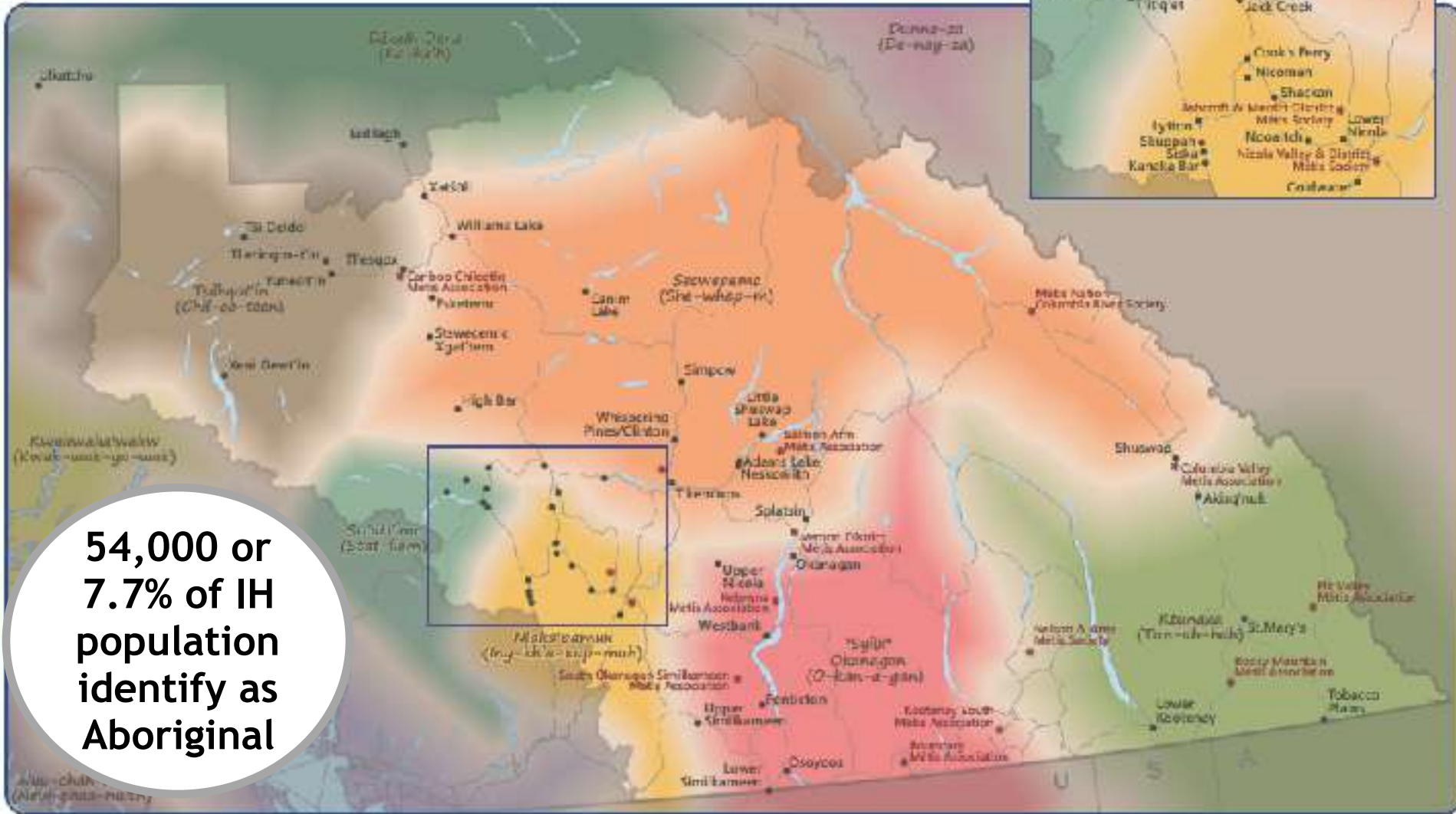
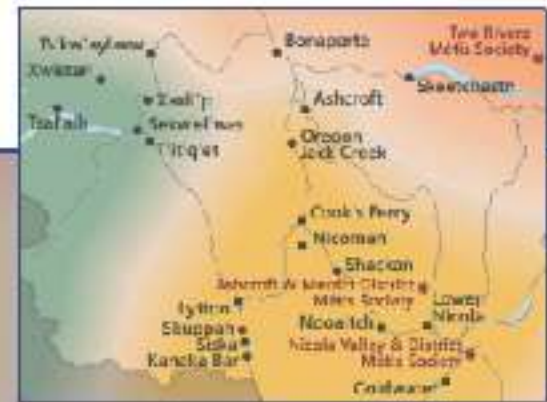
Interior Health  
*Every person matters*

# Quick Facts

- 215,000 km<sup>2</sup>
- Pop 750,000+
- 60 Municipalities
- 10 Regional Districts
- 54 FN Communities
- 13 Metis Chartered Communities
- 16 School Districts
- Smallest community pop 195
- Largest community pop 125,000



# Aboriginal & Métis Chartered Communities



**54,000 or 7.7% of IH population identify as Aboriginal**

- |   |   |  |
|---|---|--|
| <ul style="list-style-type: none"> <li>● Däwëlh Dene (Ka-kel'h) / Carrier Athapaskan</li> <li>● Tsilhqot'in (Chil-co-teen) / Chilcotin Athapaskan</li> <li>● St'at'imc (Stat-lem) / Lillooet</li> </ul> | <ul style="list-style-type: none"> <li>● Ktunaxa (Tun-ah-hah) / Kootenay Ktunaxa</li> <li>● "Syilx" Okanagan (O-kan-a-gan) / Interior Salish</li> <li>● Secwepemc (She-whep-m) / Shuswap Interior Salish</li> <li>● Nlaka'pamux (Nla-kha-kap-mux) / Thompson / Couteau</li> </ul> | <ul style="list-style-type: none"> <li>● First Nation Community</li> <li>● Métis Community</li> <li>— Highway</li> </ul> |
|---|---|--|

0 25 50 100 150 200 250 Km

Note: This map has been adapted from the First Nations Peoples of BC available at: <http://www.bccad.gov.bc.ca/abed/map.htm>. It is intended to be used as a general reference that reflects the regional diversity of First Nations People served by Interior Health.

# Healthy Communities Portfolio



# Health Sector Role

Leadership &  
Advocacy

Education

Capacity  
Building &  
Partnerships

Surveillance  
& Research

Preparing for  
Climate  
Emergencies

Medical  
Interventions  
& Training



# Region-wide: Activities

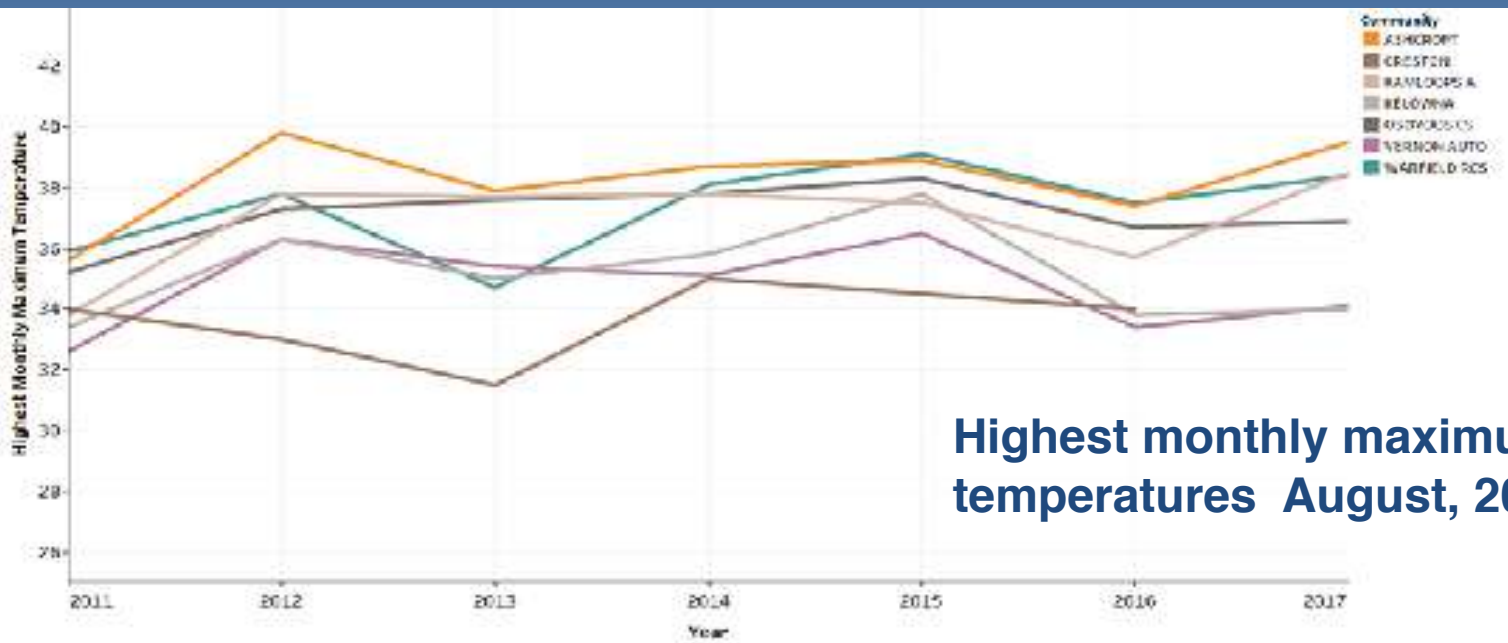
- Review public health messaging for heat & health
- Develop surveillance plan
- Engage relevant internal stakeholders
- Conduct scan of Emergency Response Plans
- Compile external stakeholder database

# Pilot: Focus on Ashcroft

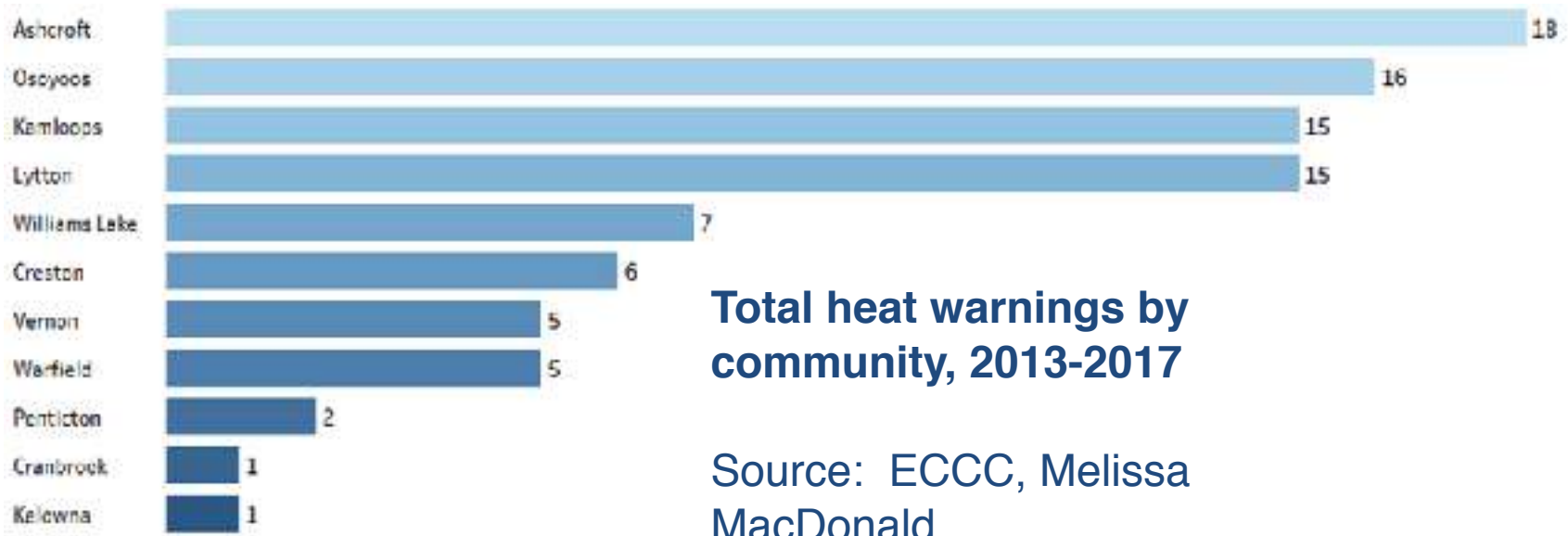
- Small, rural
- Relationship with Interior Health
- Willingness/capacity







**Highest monthly maximum temperatures August, 2011-2017**



**Total heat warnings by community, 2013-2017**

Source: ECCC, Melissa MacDonald

# Pilot Community: Activities

- Selection of Community
- Outreach to Village of Ashcroft
- Project initiation meeting with CAO
- Develop request for proposal for consultant
- Formal project presentation to Mayor & Council
- Project endorsement
- **Community engagement (2018-19)**
- **Stakeholder Meeting (2019)**
- **Develop and implement HARS (2018-19)**



*Every person matters*

# Acknowledgements

## **Village of Ashcroft:**

Michelle Allen

Mayor Jeyes and Council members

## **Interior Health:**

Jenny Green

Sylvia El Kurdi

## **Health Canada:**

Gregory Richardson

Alex Rutledge

## **Public Health Agency of Canada:**

Yuhui Xu

# Thank-you



[sue.pollock@interiorhealth.ca](mailto:sue.pollock@interiorhealth.ca)  
[heather.deegan@interiorhealth](mailto:heather.deegan@interiorhealth.ca)  
.ca