

Multisolving – addressing COVID-19, Climate Change and Inequity in an integrated way

23 June 2020

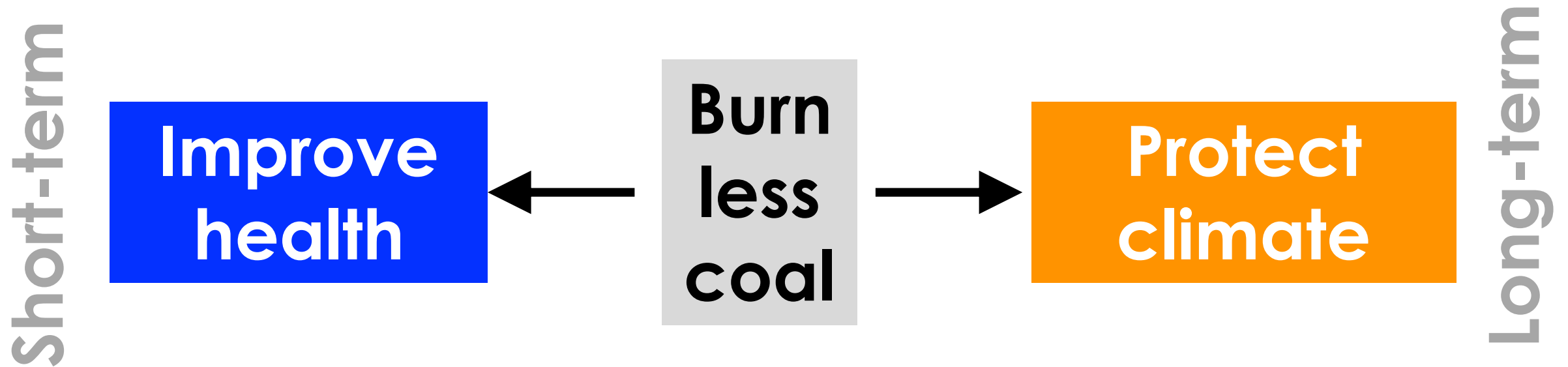
Elizabeth Sawin

Inequity

**Climate
change**

**Scale of
pandemic**

Multisolving – one action, multiple solutions



WALK TO SCHOOL OUTREACH PROJECT

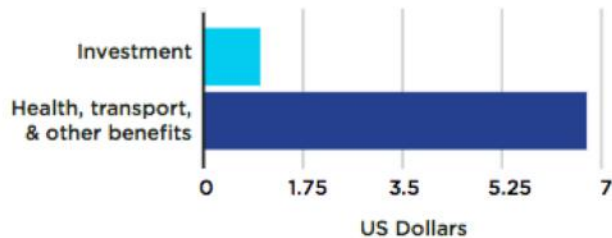
2012-2015

UNITED KINGDOM

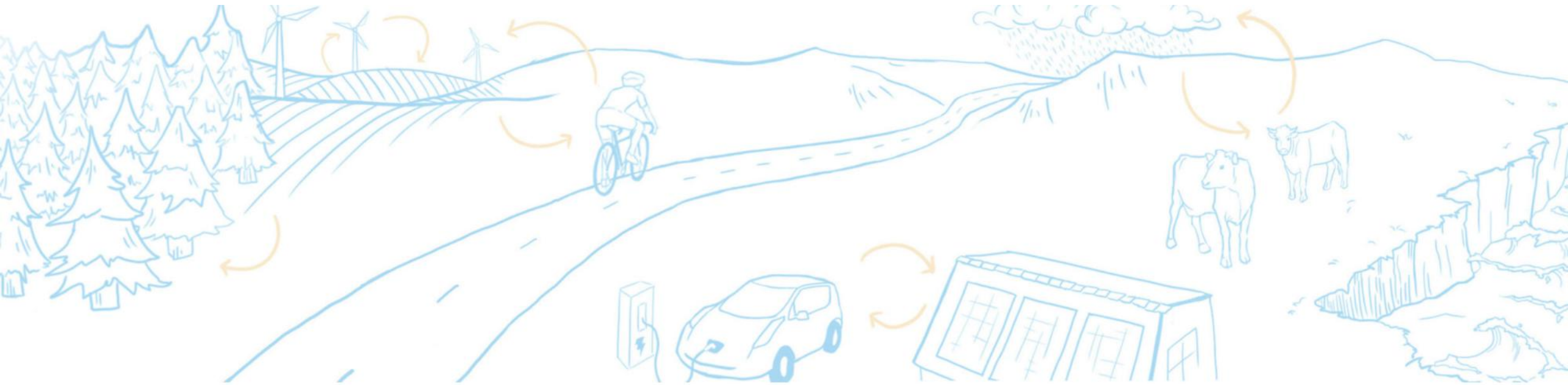
LIVING STREETS AND DURHAM
COUNTY COUNCIL



RETURN ON INVESTMENT FROM WALK TO SCHOOL CAMPAIGNS³



GREAT



GREEN, RESILIENT, AND EQUITABLE ACTIONS FOR TRANSFORMATION

*COVID-19 Integrated Recovery Plans That Multisolve For
Economic Recovery, Equity, and Climate*



About

Tools

Topics

Updates

Get Involved

Search...

Multisolving

Green Equitable Transformation

Practices & Tools

Articles

Applied Examples

Climate Analysis

The Climate Scoreboard

Simulation Models

Workshops & Games

Food Systems

ALPS

Agritopia

Systems Thinking

COVID-19, Climate Change, and Equity

The Climate Leader



EN-ROADS
Explore our climate solutions simulator ⇌

WHAT WE DO

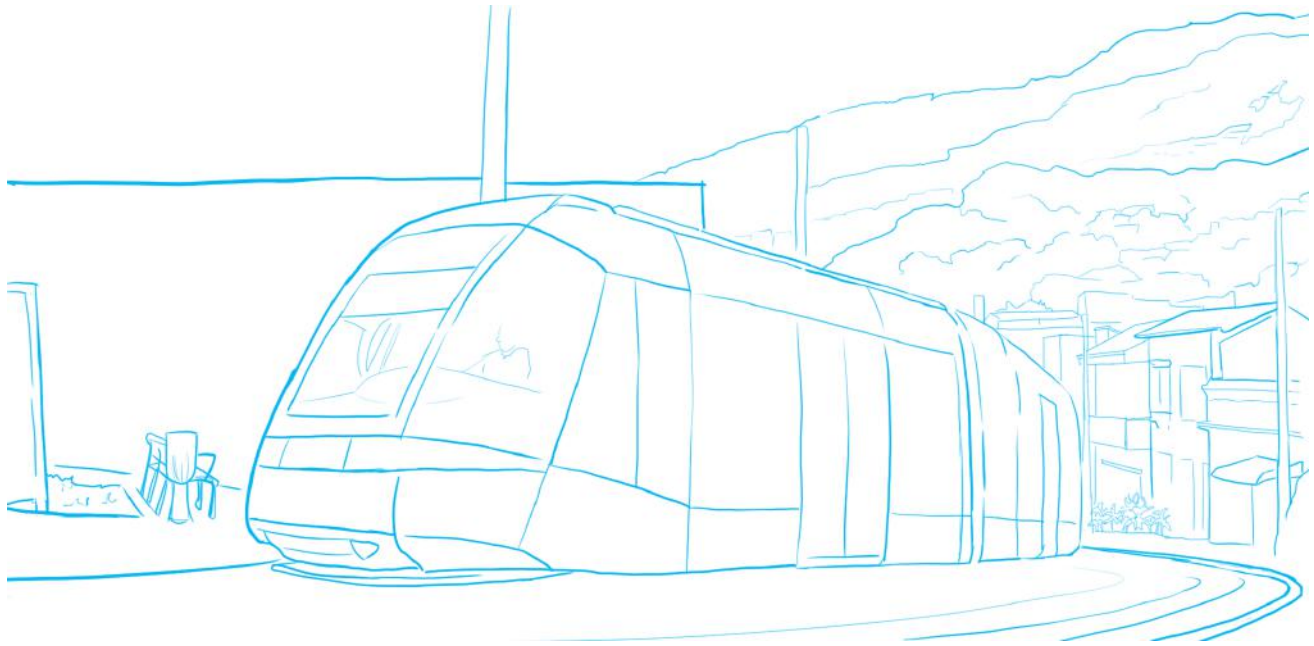


Climate Interactive creates accessible, scientifically rigorous tools that help people see connections, play out scenarios, and see what works to address the biggest challenges we face



Medellin, Colombia

[Source](#)



City officials say they will expand bike lanes by almost 50% within three years, to 145 kilometers, and more than double the number of interconnected public transport lines, including overland trains, trams and cable car lines, to 26 by 2030.

Related Co-benefits



Equity considerations

What neighborhoods do the public investments in cycling and public transportation serve?

Oakland, California USA

Source



Oakland, California, announced their city will soon be creating more outdoor space and safer corridors for essential travel by foot or bike. Oakland will restrict access to vehicles on nearly 74 miles of city street – about 10% of the city’s street network.

Related Co-benefits



Equity considerations

In general, investments that open streets to walkers and cyclists give people without cars or drivers licenses more options for mobility. How do these investments provide access for or support people with disabilities?

Multisolving is A Way Not A What



**Related
Co-benefits**

Networks, learners not 'experts', relationship based way of working, community centered

Equity considerations

Power sharing, participation, throughout process, across different domains

Thank You!

esawin@ClimateInteractive.org

Extra slides

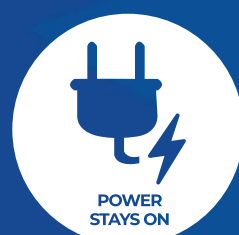
Nigeria

[Source](#)



Nigeria's Rural Electrification Agency (REA) is partnering with the African Development Bank and World Bank to fund the installation of residential solar systems as well as mini-grids for medical and health centers.

Related Co-benefits



Equity considerations

Do communities own and control the new energy infrastructure? What process is used to select communities and deploy investments?

